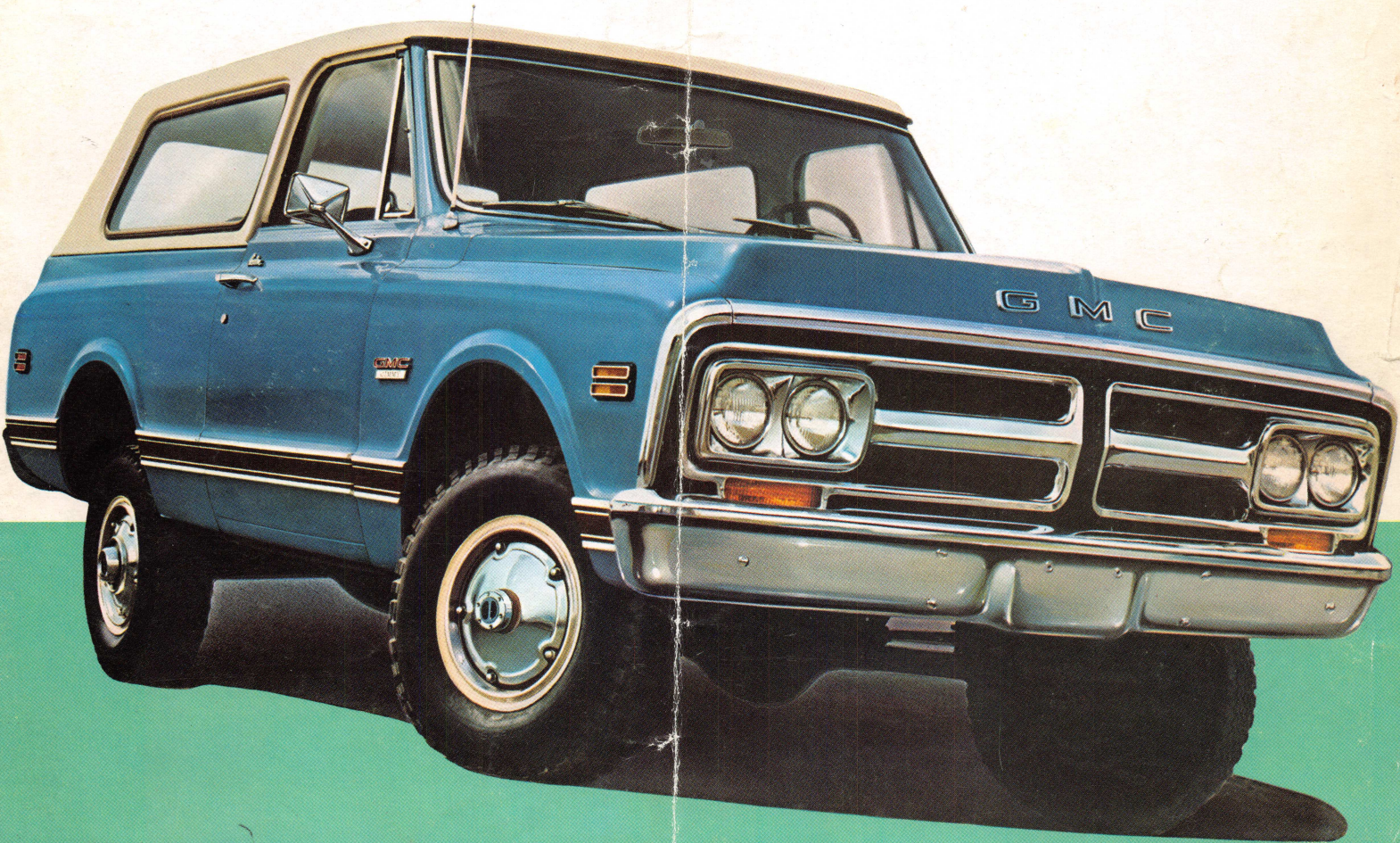




# JIMMY MODELS

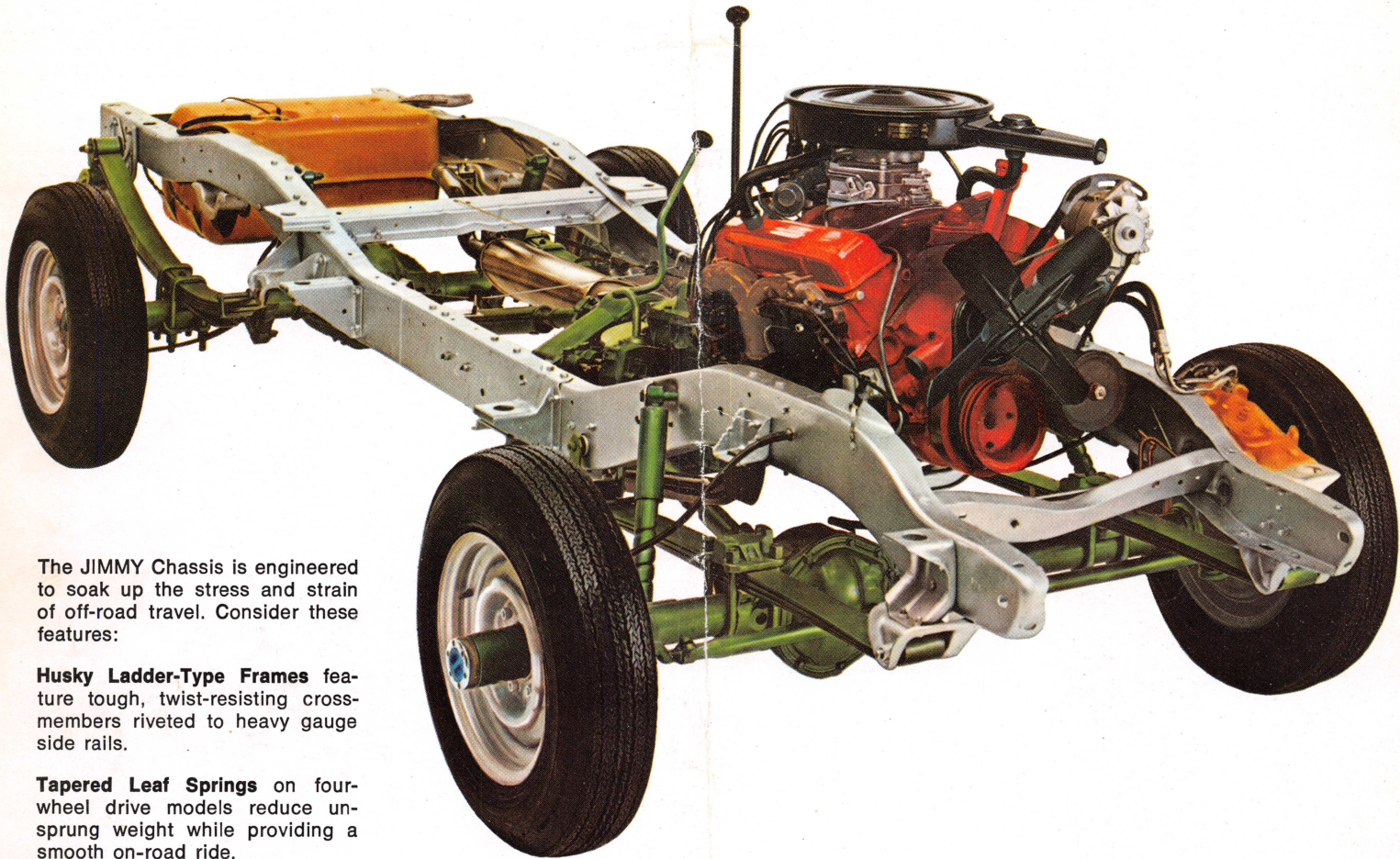


**THE TRUCK PEOPLE FROM GENERAL MOTORS**



# GMC JIMMY...

## Old Name ... New Breed



The JIMMY Chassis is engineered to soak up the stress and strain of off-road travel. Consider these features:

**Husky Ladder-Type Frames** feature tough, twist-resisting cross-members riveted to heavy gauge side rails.

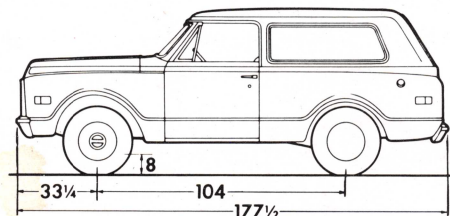
**Tapered Leaf Springs** on four-wheel drive models reduce unsprung weight while providing a smooth on-road ride.

**Vari-Rate Rear Springs** ride smoothly when lightly loaded, stiffen up for extra support when loaded.

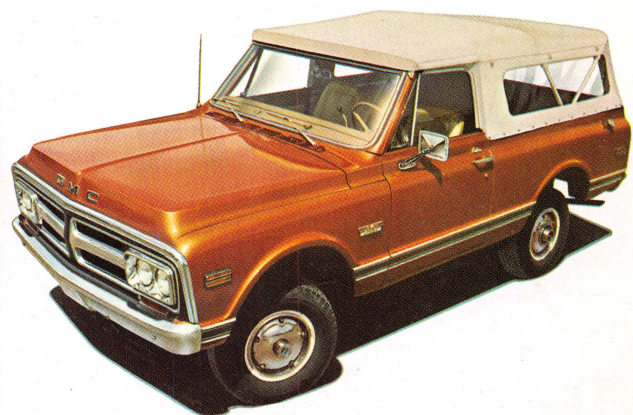
**Double-Action Shock Absorbers**, front and rear, dampen road shock, increase handling ease.

**Two-Speed Transfer Case** standard on four-wheel-drive models permits six to eight forward speeds depending on transmission selection. The transfer case bolts directly to the back of the transmission eliminating the propeller shaft normally located between the two gear boxes. The result: a lower-to-the-ground profile and easier entry and exit. A single lever controls engagement of the four-wheel-drive as well as the high and low ranges. Power-Take-Off openings are provided for accessory drives. Free wheeling front wheel hubs are available.

The JIMMY wears its name plate with pride as it carries on a worldwide tradition for on/off road dependability. JIMMY can be your kind of truck. Want off-road action? Check the JIMMY out with four-wheel drive equipment. Looking for a functional funster? Then consider the two-wheel drive JIMMY as a versatile, round-town, second car that can haul some handsomely. Want to let the sunshine in? Check your local GMC Dealer for the facts on the dealer-installed accessory soft top shown on the next page. You can have the JIMMY equipped to suit your particular needs. Have a talk with your GMC Dealer. Then get a JIMMY and go!







**The JIMMY Soft-Top** is a dealer-installed accessory that folds down like a convertible top or remains extended with sides rolled up. Preshrunk fabric is vinyl coated and treated for lasting appearance. Heat-sealed windows keep moisture out. Adds fun to any JIMMY experience!



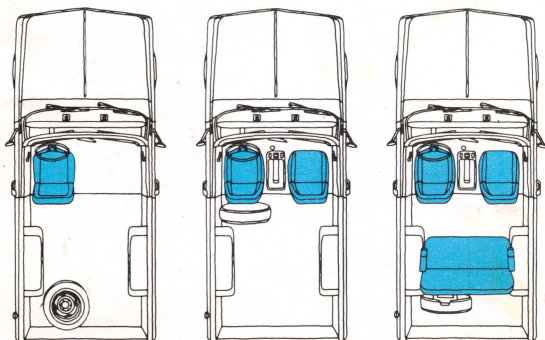
**Wide-Opening Lockable Lift and Tailgate** with room for wide, bulky loads swings open for easy and convenient loading. Spare wheel, tire and stand un-pool for extra room. Telescoping supports hold liftgate securely in open position.



**Super Custom Truck Option** is available and boasts special exterior trim items, bright metal trim, twin bucket seats with simulated tooled western motif, color keyed floor covering, and cigar lighter. It has real super eye appeal.



**With JIMMY**, you can raise the roof or fold it. Shown here, the JIMMY'S removable hardtop is available. Featuring full side windows, rear liftgate and textured roof in your choice of complimentary black or white exterior finish.

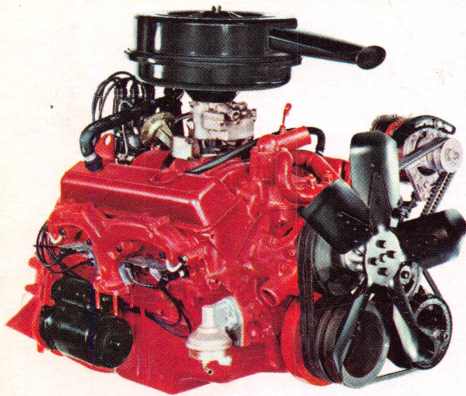


**The Standard JIMMY** has a single driver's seat. You can specify a matching low-cost companion bucket or specify the matched Super Custom Bucket Seat option with center console. An additional three-passenger bench rear seat is also available. Armrests and seat belts are provided with all seats. Available equipment and accessories can make life with JIMMY even more agreeable. See how you will be pleasantly amazed when you equip your JIMMY with available power brakes, power steering, air conditioning, pushbutton radio, tinted glass, wheel trim covers, heavy-duty shock absorbers, heavy-duty cooling system, accessory coolant recovery system and any one of fifteen solid exterior colors.



# GMC

## Big, Long Lasting Power



Invader V-8 gasoline engines combine long life with outstanding performance. Full pressure lubrication means proper oiling of all moving parts. Bearing temperatures stay low for longer life. Available on CE and KE models. In-Line six gasoline power offers advantages that hold down operating and routine maintenance expense. Seven main bearings inside and a dynamically balanced crankshaft reduce harmful vibrations and bearing pressures for a smoother running engine.

ENGINE TYPE	CUBIC INCH DISPLACEMENT	NET SAE HP @ RPM	NET SAE TORQUE (LBS.-FT.) @ RPM	BORE & STROKE	COMPRESSION RATIO
IN-LINE 6	250	110 @ 3800	185 @ 1600	3.87 x 3.53	8.5 to 1
INVADER V-8	307†	135 @ 4000	230 @ 2400	3.87 x 3.25	8.5 to 1
INVADER V-8	350	175 @ 4000	290 @ 2400	4.0 x 3.48	8.5 to 1

Engine exterior details may differ according to application.

†Not available in State of California.

For 1972, all GMC gasoline engines have been designed to operate efficiently and with lower exhaust pollutants, on no-lead or low-lead gasolines. If no-lead or low-lead gasolines are not available, any leaded regular gasoline with a Research Octane Rating Number of 91 or higher may be used.

Since 1960 General Motors Engineers have been developing systems for the reduction of exhaust and evaporative emissions. The latest developments have been incorporated in gasoline engines.

These emission control systems will perform their functions with efficiency when they are properly maintained by the user. Help keep the air clean by having your engine checked at the intervals prescribed in your owner's manual.

## Specifications

JIMMY MODELS	2-WHEEL DRIVE MODELS		4-WHEEL DRIVE MODELS	
	STANDARD	AVAILABLE	STANDARD	AVAILABLE
WHEELBASE, IN.	104		104	
MAX. GVW, LBS.	4400-5300		4600-5600	
FRONT SUSP., CAPACITY, LBS.	3100	—	3300	—
FRONT SUSPENSION, TYPE	INDEPENDENT		FRONT DRIVING RATIOS 3.73 or 3.07 to 1	
FRONT SPRINGS, TYPE	COIL	COIL	TAPERED LEAF	TAPERED LEAF
CAPACITY, LBS.	1450 EACH	1550 EACH	1500 EACH	1750 EACH
AXLE, REAR, TYPE	HYPOID	MAXIMUM TRACTION	HYPOID	MAXIMUM TRACTION
CAPACITY, LBS.	3500	3500	3500	3500
REAR SPRINGS, TYPE	COIL	COIL	TWO-STAGE, TAPERED LEAF	—
CAPACITY, LBS.	1450 EACH	2000 EACH	2000 EACH	—
ENGINES	250 CID, SIX* 307 CID, V-8†	350 CID, V-8†	250 CID, SIX* 307 CID, V-8†	350 CID, V-8†
CLUTCH, DIA., IN.	10* 11†	— 12††	10* 11†	— 12††
TRANSMISSIONS	3-SPEED	4 SPEED AT 400 AUTO††	3 SPEED	4 SPEED AT 400 AUTO††
TRANSFER CASE RATIOS	NOT SUPPLIED		2 SPEED 2.03—1.00 250 L-6 307 V-8 PROVIDED	2 SPEED 1.96—1.00 350 V-8 PROVIDED
PTO	NOT SUPPLIED		PROVIDED	PROVIDED
STEERING	MANUAL	POWER	MANUAL	POWER
BRAKES	POWER		POWER	
FUEL TANK CAP., NOMINAL GAL.	21		21	
WHEELS	DISC TYPE		DISC TYPE	
TIRES	E78-15B	7.00-15C 6.50-16C** H78-15B G78-15B L78-15B	E78-15B	G78-15B H78-15B L78-15B 7.00-15C 10-16.5C (MAX.) **6.50-16C

\*All CS/KS, In-Line 6 Cylinder Models

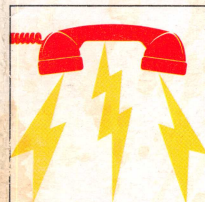
†All CE/KE, 8 Cylinder Models

††Included With 350 CID V-8

\*\*Passenger Type Tires

Vehicles shown illustrate standard or available factory-installed equipment unless noted as dealer installed accessories. Items referred to as options or available are at extra cost. Different model applications of the components that are listed in accompanying tables as well as many other items of factory-installed equipment may be ordered through your GMC Dealer.

GMC Truck & Coach Division reserves the right to make changes at any time without notice in prices, colors, materials, equipment, specifications and models and also to discontinue models. Data shown is basic information for the prospective buyer effective at time of issuance of this pamphlet. Dealer will provide complete up-to-date information on available equipment, specifications, etc. not shown here.



### GMC SUDDEN SERVICE SYSTEM ...

Need answers to truck service and maintenance questions... answers to parts requirements questions... answers to recommended truck specifications questions? Now GMC offers you direct-to-factory communications. You talk with truck experts at Pontiac, Michigan. Truck experts solve truck problems. That's why we're the truck people from General Motors. If you need us, dial toll free Monday through Friday, between 8:00 AM and 5:00 PM (EST).

GMC SUDDEN SERVICE SYSTEM: 800-521-2800  
In Michigan call: 800-572-7953

# GMC

**TRUCK & COACH DIVISION**  
GENERAL MOTORS CORPORATION  
Pontiac, Michigan 48053